



Part Number: - SI002

Package Matrix Report

Introduction:-

As often Package design needs to output different format of netlists for different purposes. One of the most common format needed is the Matrix netlist format.

Engineers and Designers are needed to spend a day or two to create such formats manually. When matrix reports are created manually they are error pron and time consuming.

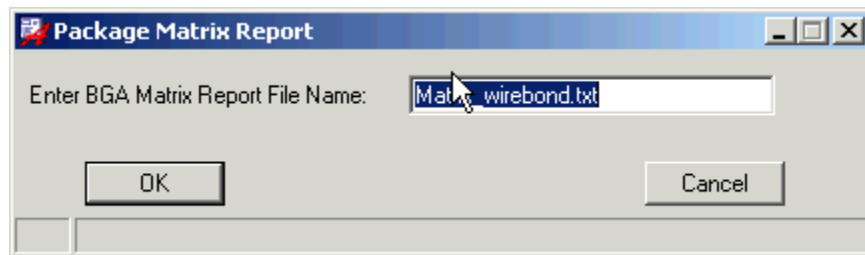
Package Matrix Report program will automatically extracts design data from **Cadence APD®** and creates the Matrix format netlists.

Features:-

1. Package Matrix Report supports multi die
2. Ball matrix netlist according to the BGA pin arrangements in the mcm file.
3. Matrix report for Die pin number
4. NC pins & Depopulated pins.
5. Multi die pins report.

GUI:-

Need to enter the output text file name.



Output:-

This program will output the text file with tab format, so user can able to import into Excel for formating.

Output from Package Matrix report in Excel worksheets



SiArt Design Systems

No 1450, 17th Cross, 1st Stage, 5th Block, HBR Layout, Brindavan Nagar, Bangalore, 560 043, India

Matrix report for Die

BGA Report for Die																											
	1	2	3	4	5	6	7	8	9	10	11	12	13	14	15	16	17	18	19	20	21	22	23	24	25	26	
A	VSS	VDD	VDD	VSS	NC	NC	NC	DIE.19	DIE.25	DIE.30	DIE.35	DIE.40	DIE.45	DIE.50	DIE.55	DIE.60	NC	NC	NC	NC	NC	VSS	VDD	VDD	VSS	A	
B	VDD	VSS	VSS	VDD	NC	NC	DIE.13	DIE.17	DIE.23	DIE.28	DIE.34	DIE.38	DIE.45	DIE.51	DIE.56	DIE.62	DIE.65	DIE.69	DIE.73	NC	NC	VDD	VSS	VSS	VDD	B	
C	VDD	VSS	VSS	VDD	NC	NC	DIE.10	DIE.11	DIE.14	DIE.18	DIE.24	DIE.31	DIE.37	DIE.44	DIE.47	DIE.57	DIE.63	DIE.68	DIE.72	DIE.75	DIE.78	DIE.79	NC	VDD	VSS	VDD	C
D	VSS	VDD	VDD	VSS	DIE.6	DIE.7	DIE.8	DIE.12	DIE.16	DIE.22	DIE.29	DIE.36	DIE.41	DIE.46	DIE.58	DIE.64	DIE.70	DIE.74	DIE.76	DIE.80	DIE.81	DIE.82	VSS	VDD	VDD	VSS	D
E	NC	NC	NC	NC	X	X	X	X	X	X	X	X	X	X	X	X	X	X	X	X	X	NC	NC	NC	NC	E	
F	NC	NC	DIE.338	DIE.340	X	X	X	X	X	X	X	X	X	X	X	X	X	X	X	X	X	NC	DIE.92	NC	NC	F	
G	NC	DIE.334	DIE.337	DIE.335	X	X	X	X	X	X	X	X	X	X	X	X	X	X	X	X	X	DIE.93	DIE.94	DIE.97	NC	G	
H	NC	DIE.331	DIE.333	DIE.336	X	X	X	X	X	X	X	X	X	X	X	X	X	X	X	X	X	DIE.98	DIE.99	DIE.100	DIE.103	H	
J	DIE.326	DIE.327	DIE.330	DIE.332	X	X	X	X	X	X	X	X	X	X	X	X	X	X	X	X	X	DIE.99	DIE.102	DIE.104	DIE.108	J	
K	DIE.322	DIE.323	DIE.328	X	X	X	X	X	X	X	X	X	X	X	X	X	X	X	X	X	X	DIE.106	DIE.109	DIE.110	DIE.114	K	
L	DIE.315	DIE.316	DIE.317	DIE.321	X	X	X	X	X	X	X	X	X	X	X	X	X	X	X	X	X	DIE.111	DIE.115	DIE.116	DIE.117	L	
M	DIE.305	DIE.310	DIE.311	DIE.314	X	X	X	X	X	X	X	X	X	X	X	X	X	X	X	X	X	DIE.120	DIE.121	DIE.122	DIE.123	M	
N	DIE.303	DIE.304	DIE.305	DIE.306	X	X	X	X	X	X	X	X	X	X	X	X	X	X	X	X	X	DIE.124	DIE.126	NC	DIE.130	N	
P	DIE.302	NC	DIE.298	DIE.296	X	X	X	X	X	X	X	X	X	X	X	X	X	X	X	X	X	DIE.134	DIE.133	DIE.132	DIE.131	P	
R	DIE.296	DIE.294	DIE.293	DIE.292	X	X	X	X	X	X	X	X	X	X	X	X	X	X	X	X	X	DIE.142	DIE.139	DIE.138	DIE.137	R	
T	DIE.286	DIE.285	DIE.287	DIE.283	X	X	X	X	X	X	X	X	X	X	X	X	X	X	X	X	X	DIE.149	DIE.145	DIE.144	DIE.143	T	
U	DIE.286	DIE.282	DIE.281	DIE.277	X	X	X	X	X	X	X	X	X	X	X	X	X	X	X	X	X	DIE.156	DIE.151	DIE.150	DIE.148	U	
V	DIE.280	DIE.276	DIE.275	DIE.272	X	X	X	X	X	X	X	X	X	X	X	X	X	X	X	X	X	DIE.160	DIE.158	DIE.155	DIE.154	V	
W	NC	DIE.274	DIE.271	DIE.268	X	X	X	X	X	X	X	X	X	X	X	X	X	X	X	X	X	DIE.164	DIE.161	DIE.159	NC	W	
Y	NC	DIE.270	DIE.268	DIE.265	X	X	X	X	X	X	X	X	X	X	X	X	X	X	X	X	X	DIE.167	DIE.165	DIE.162	NC	Y	
AA	NC	NC	DIE.266	DIE.264	X	X	X	X	X	X	X	X	X	X	X	X	X	X	X	X	X	DIE.168	DIE.166	NC	NC	AA	
AB	NC	NC	NC	NC	X	X	X	X	X	X	X	X	X	X	X	X	X	X	X	X	X	NC	NC	NC	NC	AB	
AC	VSS	VDD	VDD	VSS	DIE.254	DIE.253	DIE.252	DIE.245	DIE.246	DIE.243	DIE.235	DIE.226	DIE.221	DIE.210	DIE.206	DIE.197	DIE.191	DIE.188	DIE.184	DIE.180	DIE.179	DIE.178	VSS	VDD	VDD	VSS	AC
AD	VDD	VSS	VSS	VDD	NC	NC	DIE.251	DIE.250	DIE.247	DIE.244	DIE.237	DIE.231	DIE.225	DIE.219	DIE.212	DIE.207	DIE.201	DIE.195	DIE.190	DIE.186	DIE.183	DIE.182	NC	VDD	VSS	VDD	AD
AE	VDD	VSS	VSS	VDD	NC	NC	DIE.248	DIE.241	DIE.236	DIE.230	DIE.224	DIE.218	NC	DIE.208	DIE.202	DIE.196	DIE.194	DIE.189	DIE.185	NC	NC	VDD	VSS	VSS	VDD	AE	
AF	VSS	VDD	VDD	VSS	NC	NC	DIE.240	DIE.234	DIE.225	DIE.223	DIE.217	DIE.216	DIE.205	DIE.203	DIE.200	NC	NC	NC	NC	NC	NC	VSS	VDD	VDD	VSS	AF	

Matrix Report with Netlist

BGA Report with NetName																											
	1	2	3	4	5	6	7	8	9	10	11	12	13	14	15	16	17	18	19	20	21	22	23	24	25	26	
A	VSS	VDD	VDD	VSS	NC	NC	NC	DIE.19	DIE.25	DIE.30	DIE.35	DIE.40	DIE.45	DIE.50	DIE.55	DIE.60	NC	NC	NC	NC	NC	VSS	VDD	VDD	VSS	A	
B	VDD	VSS	VSS	VDD	NC	NC	DIE.13	DIE.17	DIE.23	DIE.28	DIE.34	DIE.38	DIE.45	DIE.51	DIE.56	DIE.62	DIE.65	DIE.69	DIE.73	NC	NC	VDD	VSS	VSS	VDD	B	
C	VDD	VSS	VSS	VDD	NC	NC	DIE.10	DIE.11	DIE.14	DIE.18	DIE.24	DIE.31	DIE.37	DIE.44	DIE.47	DIE.57	DIE.63	DIE.68	DIE.72	DIE.75	DIE.78	DIE.79	NC	VDD	VSS	VDD	C
D	VSS	VDD	VDD	VSS	DIE.6	DIE.7	DIE.8	DIE.12	DIE.16	DIE.22	DIE.29	DIE.36	DIE.41	DIE.46	DIE.58	DIE.64	DIE.70	DIE.74	DIE.76	DIE.80	DIE.81	DIE.82	VSS	VDD	VDD	VSS	D
E	NC	NC	NC	NC	X	X	X	X	X	X	X	X	X	X	X	X	X	X	X	X	X	NC	NC	NC	NC	E	
F	NC	NC	DIE.33	DIE.34	X	X	X	X	X	X	X	X	X	X	X	X	X	X	X	X	X	NC	DIE.92	NC	NC	F	
G	NC	DIE.33	DIE.33	DIE.33	X	X	X	X	X	X	X	X	X	X	X	X	X	X	X	X	X	DIE.93	DIE.94	DIE.97	NC	G	
H	NC	DIE.33	DIE.33	DIE.33	X	X	X	X	X	X	X	X	X	X	X	X	X	X	X	X	X	DIE.98	DIE.99	DIE.100	DIE.103	H	
J	DIE.32	DIE.32	DIE.33	DIE.33	X	X	X	X	X	X	X	X	X	X	X	X	X	X	X	X	X	DIE.99	DIE.102	DIE.104	DIE.108	J	
K	DIE.32	DIE.32	DIE.32	DIE.32	X	X	X	X	X	X	X	X	X	X	X	X	X	X	X	X	X	DIE.106	DIE.109	DIE.110	DIE.114	K	
L	DIE.31	DIE.31	DIE.31	DIE.31	X	X	X	X	X	X	X	X	X	X	X	X	X	X	X	X	X	DIE.111	DIE.115	DIE.116	DIE.117	L	
M	DIE.30	DIE.31	DIE.31	DIE.31	X	X	X	X	X	X	X	X	X	X	X	X	X	X	X	X	X	DIE.120	DIE.121	DIE.122	DIE.123	M	
N	DIE.30	DIE.30	DIE.30	DIE.30	X	X	X	X	X	X	X	X	X	X	X	X	X	X	X	X	X	DIE.124	DIE.126	NC	DIE.130	N	
P	DIE.30	NC	DIE.29	DIE.29	X	X	X	X	X	X	X	X	X	X	X	X	X	X	X	X	X	DIE.134	DIE.133	DIE.132	DIE.131	P	
R	DIE.29	DIE.29	DIE.29	DIE.29	X	X	X	X	X	X	X	X	X	X	X	X	X	X	X	X	X	DIE.142	DIE.139	DIE.138	DIE.137	R	
T	DIE.28	DIE.28	DIE.28	DIE.28	X	X	X	X	X	X	X	X	X	X	X	X	X	X	X	X	X	DIE.149	DIE.145	DIE.144	DIE.143	T	
U	DIE.28	DIE.28	DIE.28	DIE.27	X	X	X	X	X	X	X	X	X	X	X	X	X	X	X	X	X	DIE.156	DIE.151	DIE.150	DIE.148	U	
V	DIE.28	DIE.27	DIE.27	DIE.27	X	X	X	X	X	X	X	X	X	X	X	X	X	X	X	X	X	DIE.160	DIE.158	DIE.155	DIE.154	V	
W	NC	DIE.27	DIE.27	DIE.27	X	X	X	X	X	X	X	X	X	X	X	X	X	X	X	X	X	DIE.164	DIE.161	DIE.159	NC	W	
Y	NC	DIE.27	DIE.26	DIE.26	X	X	X	X	X	X	X	X	X	X	X	X	X	X	X	X	X	DIE.167	DIE.165	DIE.162	NC	Y	
AA	NC	NC	DIE.26	DIE.26	X	X	X	X	X	X	X	X	X	X	X	X	X	X	X	X	X	DIE.168	DIE.166	NC	NC	AA	
AB	NC	NC	NC	NC	X	X	X	X	X	X	X	X	X	X	X	X	X	X	X	X	X	NC	NC	NC	NC	AB	
AC	VSS	VDD	VDD	VSS	DIE.25	DIE.25	DIE.25	DIE.24	DIE.24	DIE.24	DIE.23	DIE.22	DIE.22	DIE.21	DIE.20	DIE.19	DIE.19	DIE.18	DIE.18	DIE.18	DIE.17	DIE.17	VSS	VDD	VDD	VSS	AC
AD	VDD	VSS	VSS	VDD	NC	NC	DIE.24	DIE.24	DIE.24	DIE.23	DIE.23	DIE.22	DIE.22	DIE.21	DIE.20	DIE.20	DIE.19	DIE.19	DIE.18	DIE.18	DIE.18	DIE.18	NC	VDD	VSS	VDD	AD
AE	VDD	VSS	VSS	VDD	NC	NC	DIE.24	DIE.24	DIE.24	DIE.23	DIE.23	DIE.22	DIE.22	DIE.21	DIE.20	DIE.20	DIE.19	DIE.19	DIE.18	DIE.18	DIE.18	NC	VDD	VSS	VDD	AE	
AF	VSS	VDD	VDD	VSS	NC	NC	DIE.24	DIE.24	DIE.23	DIE.22	DIE.22	DIE.21	DIE.21	DIE.20	DIE.20	DIE.20	NC	NC	NC	NC	NC	VSS	VDD	VDD	VSS	AF	

Multiple Die Pin or Ball pin report

Nets with more than one die pin number										
VSS	DIE.101	DIE.106	DIE.113	DIE.118	DIE.125	DIE.128	DIE.135	DIE.140	DIE.147	DIE.15
	DIE.152	DIE.157	DIE.163	DIE.177	DIE.187	DIE.192	DIE.199	DIE.20	DIE.204	DIE.211
	DIE.214	DIE.221	DIE.226	DIE.233	DIE.238	DIE.243	DIE.255	DIE.263	DIE.27	DIE.273
	DIE.278	DIE.285	DIE.290	DIE.297	DIE.300	DIE.307	DIE.312	DIE.319	DIE.32	DIE.324
	DIE.329	DIE.341	DIE.39	DIE.42	DIE.49	DIE.5	DIE.54	DIE.61	DIE.66	DIE.71
	DIE.83	DIE.91								
VDD	DIE.107	DIE.112	DIE.119	DIE.129	DIE.136	DIE.141	DIE.146	DIE.153	DIE.163	DIE.181
	DIE.193	DIE.198	DIE.205	DIE.21	DIE.215	DIE.222	DIE.227	DIE.232	DIE.239	DIE.249
	DIE.26	DIE.267	DIE.279	DIE.284	DIE.291	DIE.301	DIE.308	DIE.313	DIE.318	DIE.325
	DIE.33	DIE.335	DIE.43	DIE.50	DIE.55	DIE.60	DIE.67	DIE.77	DIE.9	DIE.95

Nets with more than one BGA pin number										
VSS	BGA.A1	BGA.A23	BGA.A26	BGA.A4	BGA.AC1	BGA.AC23	BGA.AC26	BGA.AC4		
	BGA.AD2	BGA.AD24	BGA.AD25	BGA.AD3	BGA.AE2	BGA.AE24	BGA.AE27	BGA.AE3	BGA.AF1	BGA.AF23
	BGA.AF26	BGA.AF4	BGA.B2	BGA.B24	BGA.B25	BGA.B3	BGA.C2	BGA.C24	BGA.C25	BGA.C3
	BGA.D1	BGA.D23	BGA.D26	BGA.D4						
VDD	BGA.A2	BGA.A24	BGA.A25	BGA.A3	BGA.AC2	BGA.AC24	BGA.AC25	BGA.AC3	BGA.AD1	BGA.AD23
	BGA.AD26	BGA.AD4	BGA.AE1	BGA.AE23	BGA.AE26	BGA.AE4	BGA.AF2	BGA.AF24	BGA.AF25	BGA.AF3
	BGA.B1	BGA.B23	BGA.B26	BGA.B4	BGA.C1	BGA.C23	BGA.C26	BGA.C4	BGA.D2	BGA.D24
	BGA.D25	BGA.D3								

Contact details:-

Email: sales@siartdesign.com, Tel: 91-80-25434115, [http://www.siartdesign](http://www.siartdesign.com)